



18157 East Petroleum Drive
Baton Rouge, Louisiana 70809
Office (225) 751-3553
Fax (225) 751-3543
www.peters-fr.com

January 15, 2024

Mr. Michael B. Cooper
Parish President
St. Tammany Parish
P.O. Box 628
Covington, LA 70434

Mr. Michael V. Farabee
US Army Corps of Engineers
New Orleans District
Regulatory Branch, Eastern Evaluation Section
CEMVN-OD-S
7400 Leake Avenue
New Orleans, LA 70118

Re: 2023 Inspection of Bedico Creek Mitigation Area (380 acres)
Secs 5, 6, 7 & 8, T7S, R10E and Sec 31, T6S, R10E
St. Tammany Parish, LA

Mr. Cooper and Mr. Farabee:

On December 12, 2023 Peters Forest Resources, Inc. (PFR) conducted an onsite field visit of the Bedico Creek Mitigation Area (Attachment A). A Conservation Servitude was recorded for the Bedico Creek Mitigation Area on October 10, 2011 (St. Tammany Parish Instrument No. 1831328, Registry No. 2099056). The original 377-acre conservation servitude area is comprised of Conservation Area No. 1 – Northeast Area (195.09 ac) and Conservation Area No. 2 – Southwest Area (182.22 ac). In addition to the original areas, and additional 2.63 acres was added to the conservation servitude area in 2015. PFR foresters inspected the perimeter and accessible interior of each area in accordance with Section 5 of the Conservation Servitude.

Based on PFR's observations, the Bedico Creek Mitigation Area is in compliance with Sections 4a-1 of the Conservation Servitude, with the exception of one observed instance. The home located at 2065 Cypress Bend land has multiple minor encroachments into the NE conservation area. These encroachments include a deer feeder, a children's playhouse, multiple wooden pallets, chairs & hammocks, etc (Ground Photo 8). However, these minor encroachments do not appear to negatively affect the servitude area in any way. It should be noted that the Bedico Creek Homeowners Association is actively pursuing this homeowner to remove the encroachments from the servitude area.

Representative photographs of the Bedico Creek Mitigation Area and photograph locations are contained in the attachments to this report. To date, no forest management activities have been implemented in the Bedico Creek Mitigation Area. The acres along Interstate Hwy 12 in the Northeast Conservation Area cleared a few years ago continues to be well on its way to recovery.

Thank you for the opportunity to assist you with this project and please do not hesitate to contact me if you have any questions or need additional information.

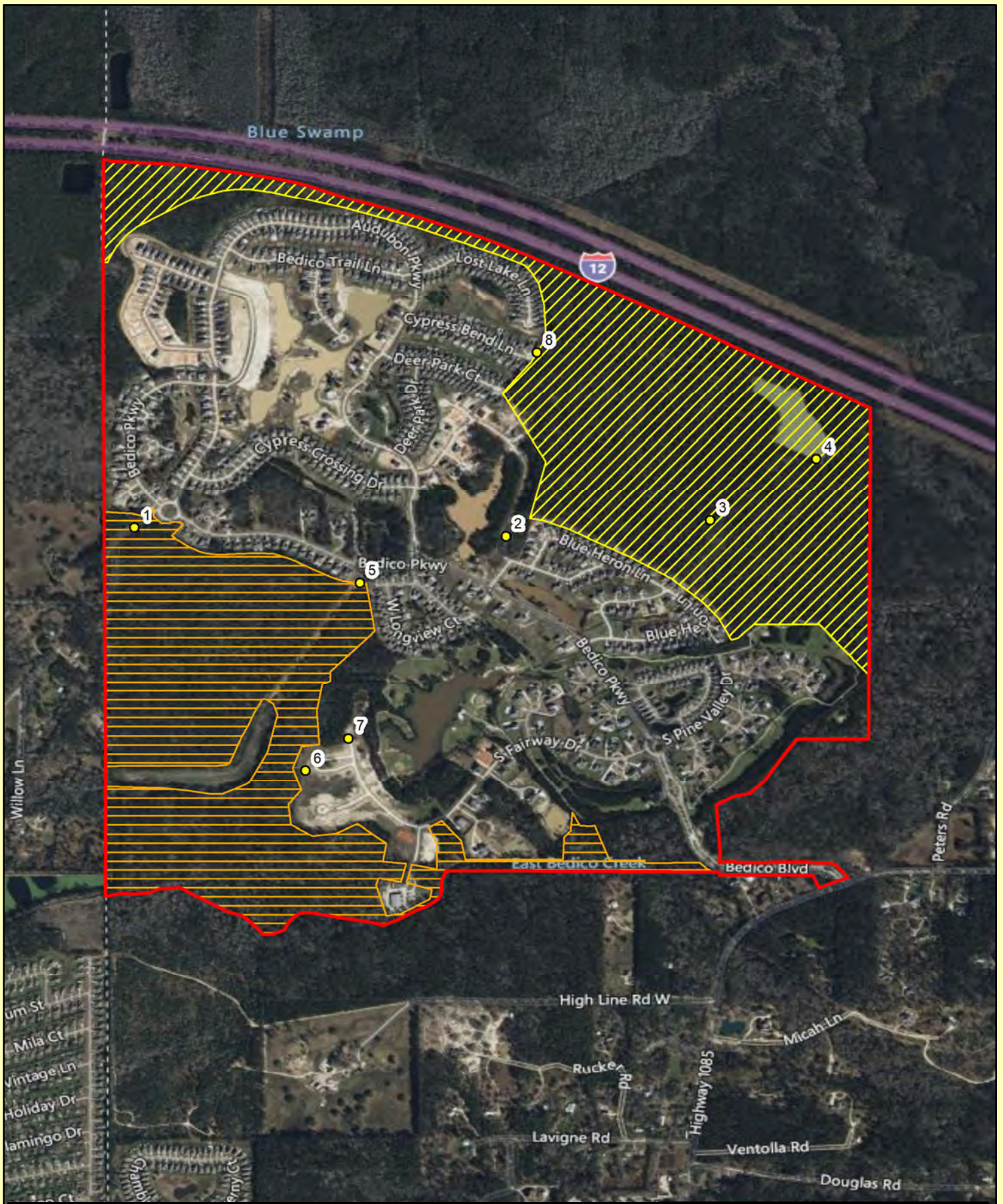
Respectfully submitted,
PETERS Forest Resources, Inc.



Lewis Peters II, Forester

cc: Bedico Creek Preserve Owners Association, Inc.
c/o David L. Waltemath via email: david@cpmcnola.com

***Attachment A:
Ground Photo Location Map***



Legend

- 2023GroundPhotos
- Property
- Conservation Area 1 (NE)
- Conservation Area 2 (SW)

Bedico Creek Preserve, LLC.
 2023 Inspection Photo Locations Map
 Sections 5, 6, 7 & 8; T-7-S, R-10-E
 St. Tammany Parish, Louisiana

Date: 1/12/2024
 Path: F:\ArcView Data\Bedico Creek\Bedico Creek 2015 Inspection PhotoLocations.mxd

0 330 660 1,320 1,980 Feet

PETERS
Forest Resources

Attachment B: Ground Photographs



Photo 01: View looking SW along gravel road inside of the servitude area.



Photo 02: View looking N into new development area near servitude boundary.



Photo 03: View looking along ATV trail inside of servitude area.



Photo 04: View looking into Lost Lake.



Photo 05: View looking SW along large drainage ditch inside of servitude area.



Photo 06: View N into backyard of new home site near servitude boundary.

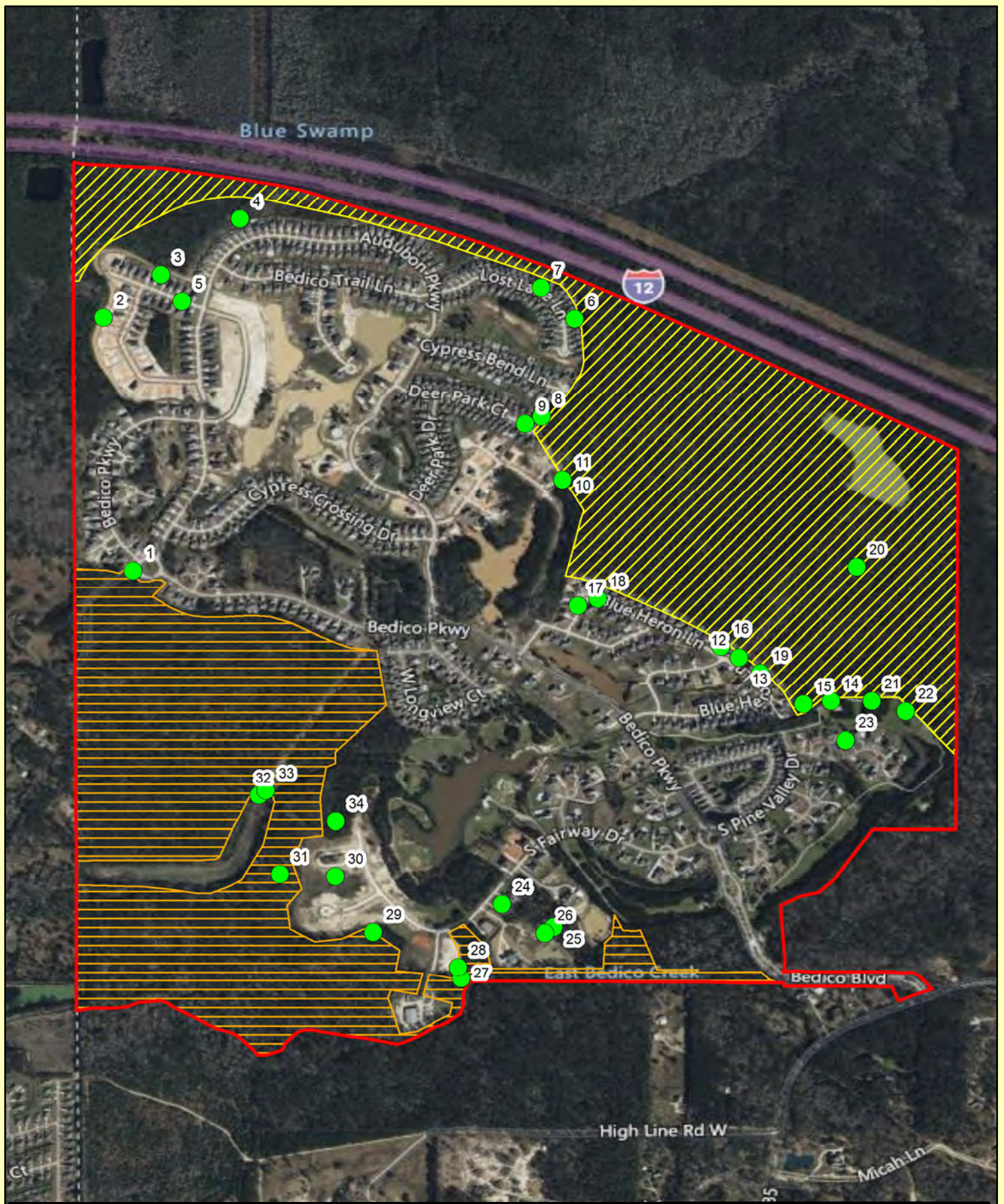


Photo 07: View looking N into new construction area.



Photo 07: View looking into minor encroachment into servitude area.

***Attachment C:
Aerial Photographs Location Map***



Legend

- 2023 Aerial Photos
- Property
- Conservation Area 1 (NE)
- Conservation Area 2 (SW)

Bedico Creek Preserve, LLC.
 2023 Inspection Photo Locations Map
 Sections 5, 6, 7 & 8; T-7-S, R-10-E
 St. Tammany Parish, Louisiana

Date: 1/12/2024
 Path: F:\ArcView Data\Bedico Creek\Bedico Creek 2015 Inspection Photo Locations.mxd



Attachment D: Aerial Photographs



Photo 01: View looking SE.



Photo 02: View looking N.



Photo 03: View looking NE.



Photo 04: View looking E.



Photo 05: View looking NW.



Photo 06: View NW.



Photo 07: View looking NW.



Photo 08: View looking S.



Photo 09: View looking NW.



Photo 10: View looking S.



Photo 11: View looking NW.



Photo 12: View looking NW.



Photo 13: View SE.



Photo 14: View looking E.



Photo 15: View looking NW.



Photo 16: View looking NW.



Photo 17: View looking NNW.



Photo 18: View looking SE.



Photo 19: View looking down at minor encroachment into servitude area.



Photo 20: View looking N.



Photo 21: View looking E.



Photo 22: View looking NW.



Photo 23: View looking ENE.



Photo 24: View looking SE.



Photo 25: View looking down at previous storm damage at servitude boundary.



Photo 26: View looking down at home site near servitude boundary.



Photo 27: View looking at storage unit facility.



Photo 28: View looking NW.



Photo 29: View looking NNW.



Photo 30: View looking new home site near servitude boundary.



Photo 31: View looking E.



Photo 32: View looking NE.



Photo 33: View looking SW.



Photo 34: View looking S.