



37283 Swamp Rd., Unit 702
Prairieville, Louisiana 70769
Office (225) 751-3553
www.peters-fr.com

February 2, 2026

Mr. Michael B. Cooper
Parish President
St. Tammany Parish
P.O. Box 628
Covington, LA 70434

Mr. Michael V. Farabee
US Army Corps of Engineers
New Orleans District
Regulatory Branch, Eastern Evaluation Section
CEMVN-OD-S
7400 Leake Avenue
New Orleans, LA 70118

Re: 2025 Inspection of Bedico Creek Mitigation Area (380 acres)
Secs 5, 6, 7 & 8, T7S, R10E and Sec 31, T6S, R10E
St. Tammany Parish, LA

Mr. Cooper and Mr. Farabee:

On December 22, 2025 Peters Forest Resources, Inc. (PFR) conducted an onsite field visit of the Bedico Creek Mitigation Area (Attachment A). A Conservation Servitude was recorded for the Bedico Creek Mitigation Area on October 10, 2011 (St. Tammany Parish Instrument No. 1831328, Registry No. 2099056). The original 377-acre conservation servitude area is comprised of Conservation Area No. 1 – Northeast Area (195.09 ac) and Conservation Area No. 2 – Southwest Area (182.22 ac). In addition to the original areas, and additional 2.63 acres was added to the conservation servitude area in 2015. PFR foresters inspected the perimeter and accessible interior of each area in accordance with Section 5 of the Conservation Servitude.

Based on PFR's observations, the Bedico Creek Mitigation Area is in compliance with Sections 4a-1 of the Conservation Servitude. Over the recent years, multiple residential construction sites have been developed within the Bedico Creek neighborhood.

Representative photographs of the Bedico Creek Mitigation Area and photograph locations are contained in the attachments to this report. To date, no forest management activities have been implemented in the Bedico Creek Mitigation Area. The acres along

Interstate Hwy 12 in the Northeast Conservation Area cleared a few years ago continues to be growing properly and is considered to be recovered.

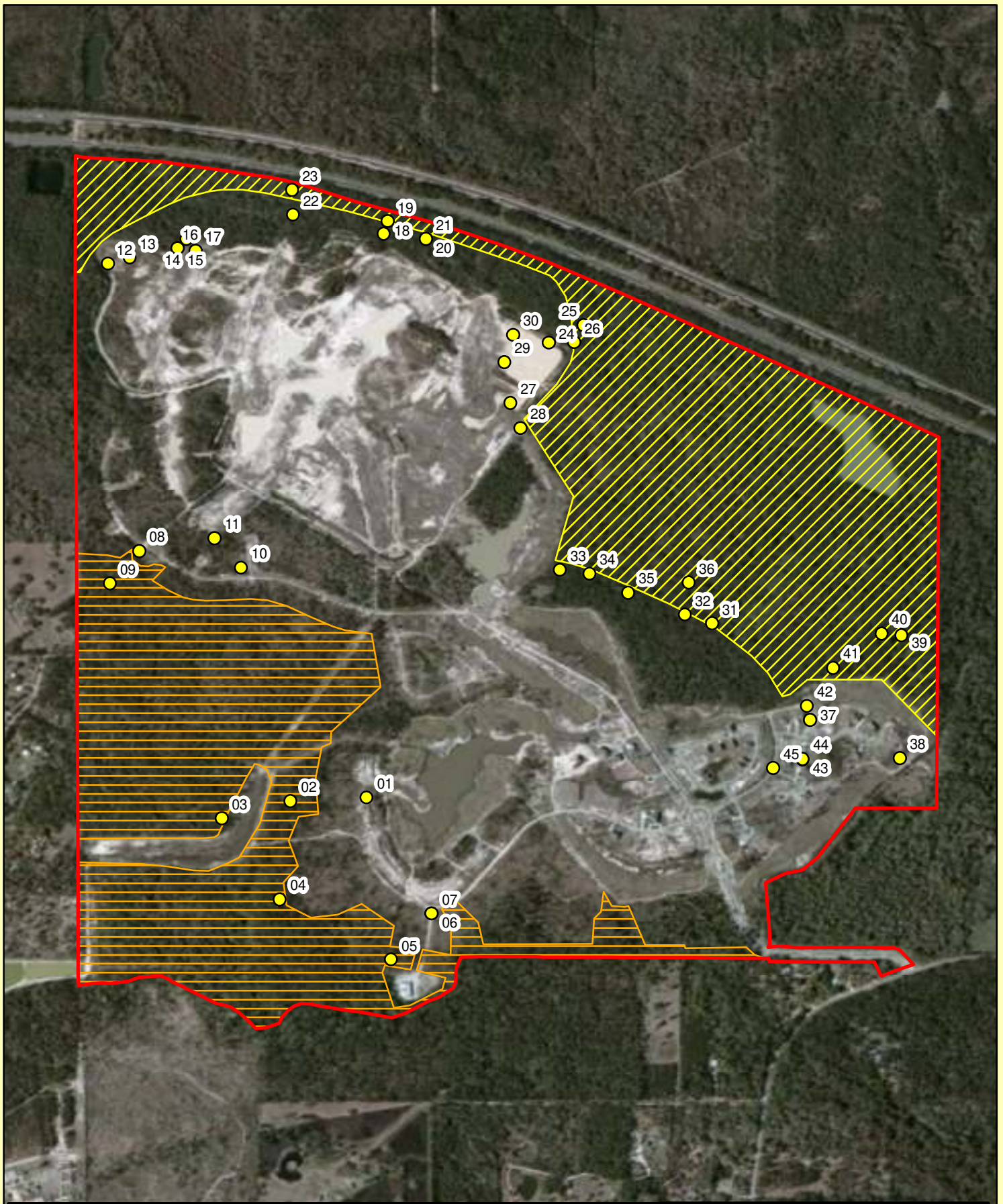
Thank you for the opportunity to assist you with this project and please do not hesitate to contact me if you have any questions or need additional information.

Respectfully submitted,
PETERS Forest Resources, Inc.

A handwritten signature in blue ink that reads "Lewis Peters II". The signature is fluid and cursive, with the "II" at the end being clearly legible.

Lewis Peters II, Forester

cc: Bedico Creek Preserve Owners Association, Inc.
c/o David L. Waltemath via email: david@cpmcnola.com



Legend

- 2025_DronePhotoLocations
- Property
- Conservation Area 1 (NE)
- Conservation Area 2 (SW)

Bedico Creek Preserve, LLC.
 2025 Inspection Aerial Photo Map
 Sections 5, 6, 7 & 8; T-7-S, R-10-E
 St. Tammany Parish, Louisiana

Date: 1/30/2026
 Path: C:\Users\lewis2\OneDrive - Peters Forest Resources\Map Data\ArcView Data\Bedico Creek\Bedico Creek 2025 Inspection PhotoLocations.mxd





Photo 01: View looking SE.



Photo 02: View looking S.



Photo 03: View looking NE.



Photo 04: View looking E.



Photo 05: View looking S.



Photo 06: View S.



Photo 07: View looking W.



Photo 08: View looking E.



Photo 09: View looking E.



Photo 10: View looking SE.



Photo 11: View looking S.



Photo 12: View looking NE.



Photo 13: View E.



Photo 14: View looking N.



Photo 15: View looking NW.



Photo 16: View looking E.



Photo 17: View looking E.



Photo 18: View looking W.



Photo 19: View looking E.



Photo 20: View looking NE.



Photo 21: View looking W.



Photo 22: View looking W



Photo 23: View looking E.



Photo 24: View looking NW.



Photo 25: View looking NW.



Photo 26: View looking E.



Photo 27: View looking SE.



Photo 28: View looking N.



Photo 29: View looking E.



Photo 30: View N.



Photo 31: View looking E.



Photo 32: View looking N.



Photo 33: View looking N.



Photo 34: View looking E.



Photo 35: View looking NE.



Photo 36: View looking E.



Photo 37: View NW.



Photo 38: View looking N.



Photo 39: View looking NNW.



Photo 40: View looking W.



Photo 41: View looking E.



Photo 42: View looking E.



Photo 43: View looking N



Photo 44: View looking NE.



Photo 45: View looking NNW.